

General Plan Update Steering Committee Meeting #1

March 11, 2020
6:30 PM

A kickoff meeting of the Steering Committee for the Geauga County General Plan update was held at 6:30 PM on March 11, 2020, at the Geauga County offices in Building 8.

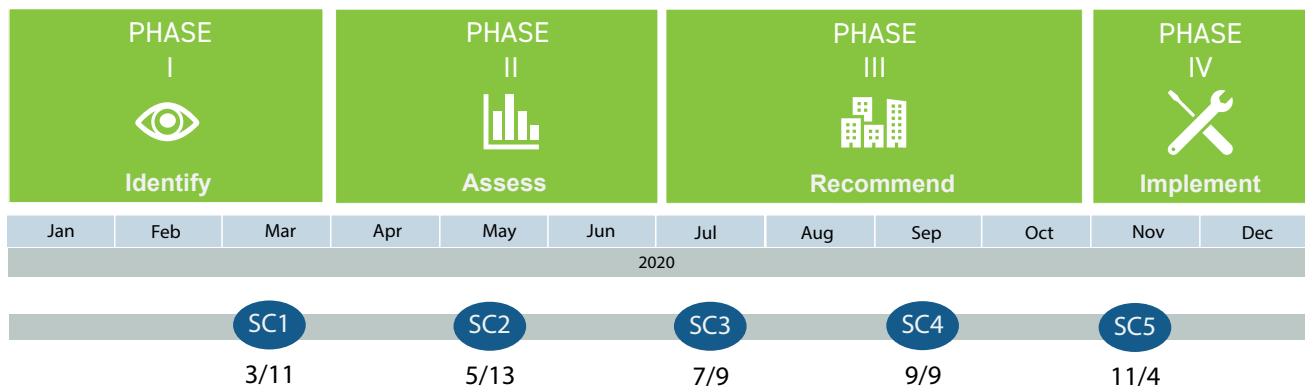
This document summarizes discussion highlights from the meeting:

- Planning Process Overview & Timeline (see below)
- Geographic Typologies (see [Page 2](#))
- Questionnaire Responses - Group Discussion Summary (see [Page 3](#))
- Strengths. Opportunities. Aspirations. Realities. (SOAR) Analysis (see [Page 4](#))
- County-wide Issues - Top Priorities (see [Page 5](#))
- Public Engagement Strategies (see [Page 6](#))

As noted on the timeline below the Steering Committee will meet at the same time and place on the following dates:

- May 13th (Wednesday)
- July 9th (Thursday)
- September 9th (Wednesday)
- November 4th (Wednesday)

Plan Update Process

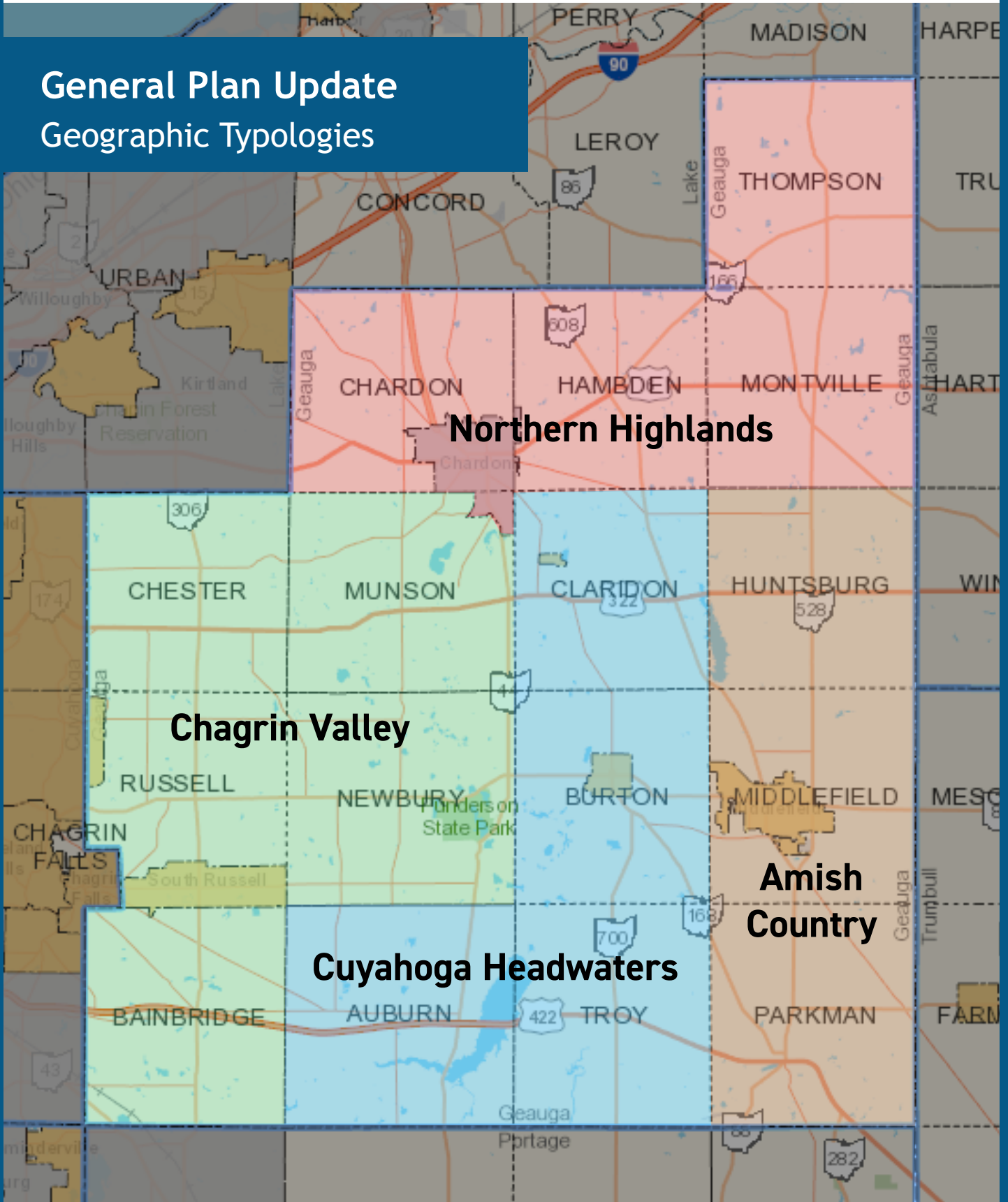


Steering Committee Meetings

SC# Steering Committee Meeting



General Plan Update
Geographic Typologies



Questionnaire Responses

Discussion Summary



STRATEGIC ADVANTAGES

Reasons you Locate in Geauga County:

- Jobs - Proximity to Work - Ease of commute to Cuyahoga County
- Family
- Safety
- Quality of Life
- Natural Beauty of the Countryside
- Rural Character
- Tight knit community



WEAKNESSES

Weaknesses that hold the County back:

- “Lack of Relevant Housing” - in size, price point, target age cohorts (esp. young adults, seniors)
- Euclidean zoning (esp. large lots, lack of mixed-use)
- Utilities (broadband, water/sewer)
- Workforce (lack of affordable housing & transit accessibility)
- No Growth/young people leaving



CIVIC PRIDE

Sources of Civic Pride:

- “Everyone knows each other”
- Quality Schools
- County Fair
- Civic Support for Fire & EMS
- Continuity in County Administration / Department employees
- Local business community
- Committed organizations (e.g. Veterans, 4H, etc.)
- High morale



INVESTMENT AREAS

Geographic areas in Need of Investment:

- SR 87 (Newbury Township)
- Chardon Square
- US 322 (Chester Township - Caves Rd to SR 306)
- SR 306 (Bainbridge Township)
- US 422 Corridor - new interchange at Munn Rd in Auburn Township
- Intersection of SR 87 & SR 306 (Russell Township)

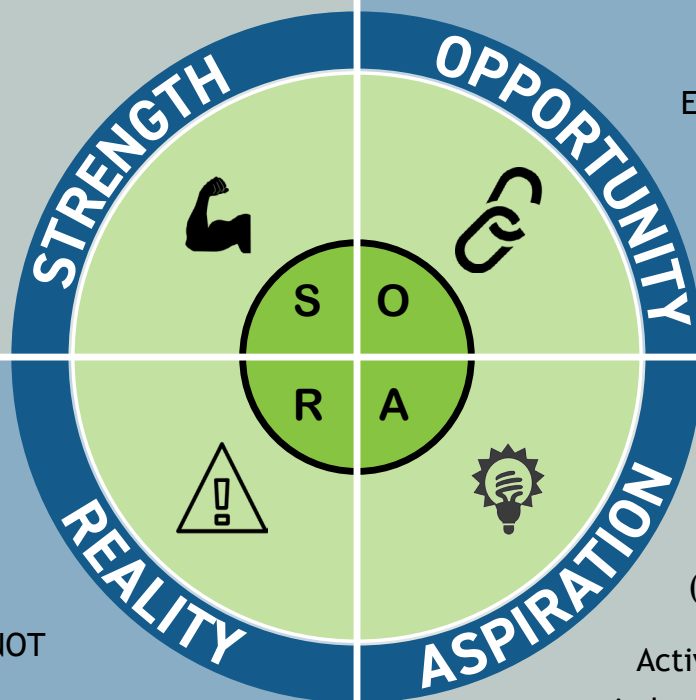
SOAR Analysis
Discussion Summary

“Competitive advantages”

- Community Pride
- Quality of Life
- Location
- Small Businesses
- Wealth

“untapped potential”

- Medical Growth (Clinic)
- Educational Partnerships (KSU Geauga)
- Existing Workforce (keep them here)



- Utilities
- Infrastructure
- Zoning
- Every Township does NOT need everything

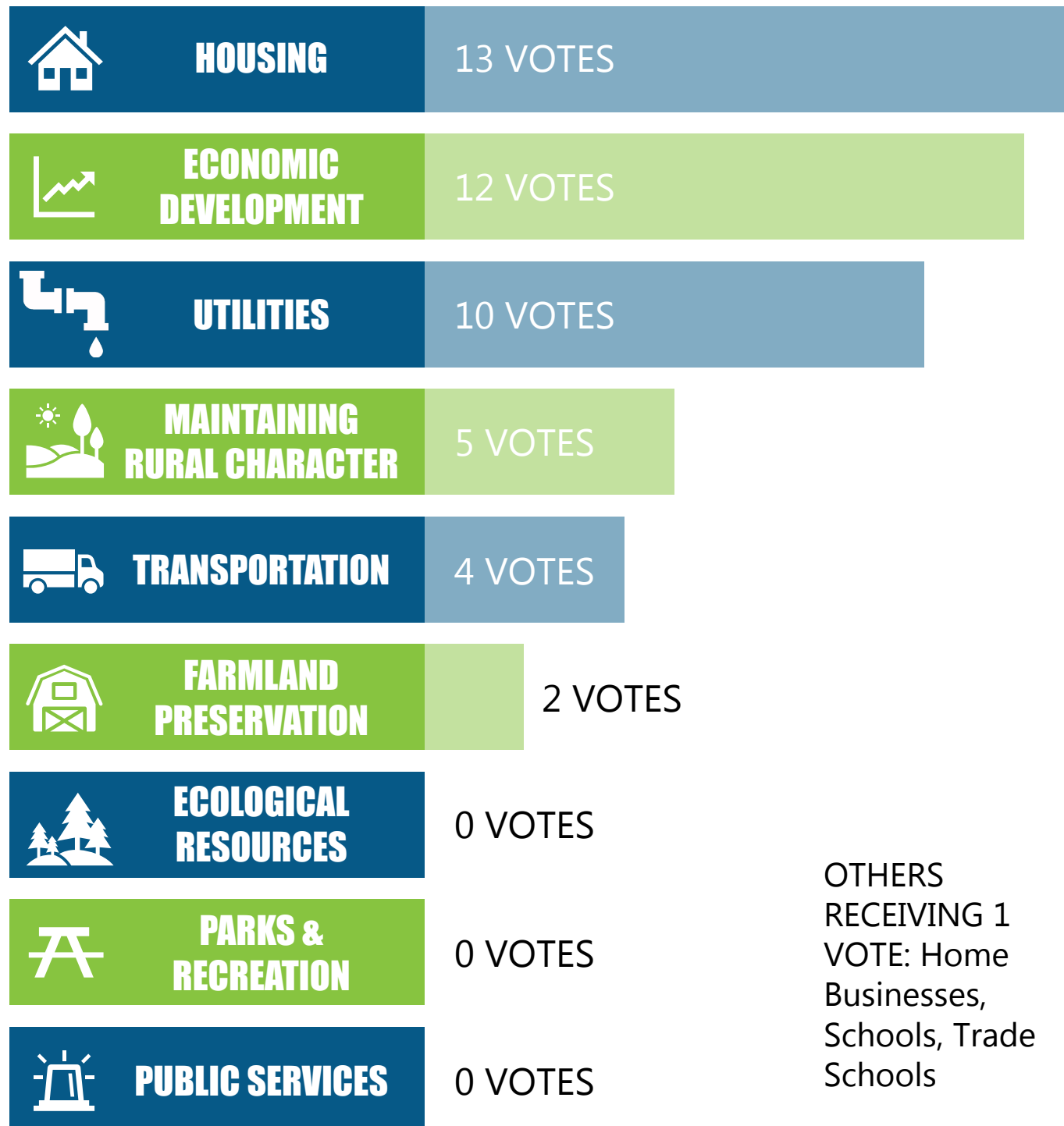
- Limited nodes of Mixed-Use (Town Center)
- Economic Development (ecotourism/agritourism)
- Active Recreation Facilities - indoor & outdoor fields/courts

“impediments & roadblocks”

“long-term desires”

County-wide Issues Top Priorities Discussion

NOTE: Steering Committee members were given a vote for each of their Top 3 priorities



OTHERS
RECEIVING 1
VOTE: Home
Businesses,
Schools, Trade
Schools

Public Engagement Strategies

Survey & Public Forums



PUBLIC SURVEY

Methods/Locations for Public Survey Distribution:

- Libraries
- Targeted Amish community leaders
- Geauga Township Association - July meeting in Huntsburg to promote
- State of the County - Luncheon
- Social Media - Facebook in County works best because of age
- Local Newspaper - Maple Leaf
- Senior Centers & Senior newspapers
- KSU Geauga campus



PUBLIC FORUMS

Public Forum Locations:

- South Russell - Village Hall
- Chardon - Heritage Hall
- Middlefield Library
- Kent State University Geauga Campus (Burton)